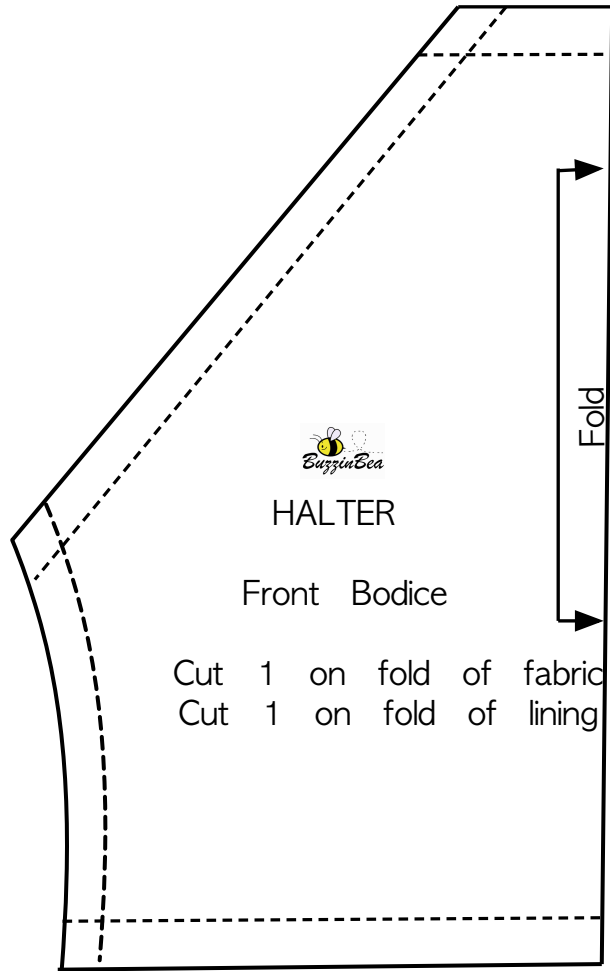


HALTER DRESS FOR
18 inch dolls



Cut 1 on fold of fabric
Cut 1 on fold of lining

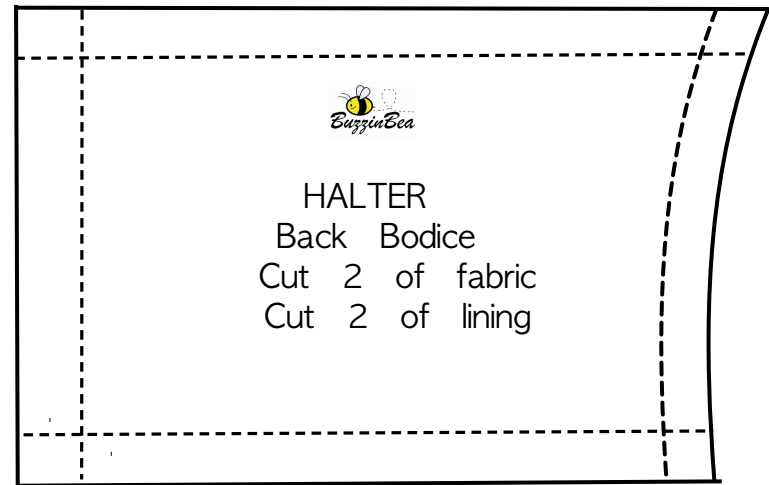
Neck Strap

Cut 1.5 x 16 inches of fabric

Dress Skirt

Cut 4 x 26 fabric
Cut 1.5 x 44 fabric

Note: Use the 1 inch box reference to make sure you printed the correct size.
18 inch dolls' waistlines also vary, so try fitting the dress on your doll first
before sewing the back seam and adding the velcro.



HALTER
Back Bodice
Cut 2 of fabric
Cut 2 of lining

1 inch